

Place and Corporate Overview and Scrutiny Committee, 5th July 2017



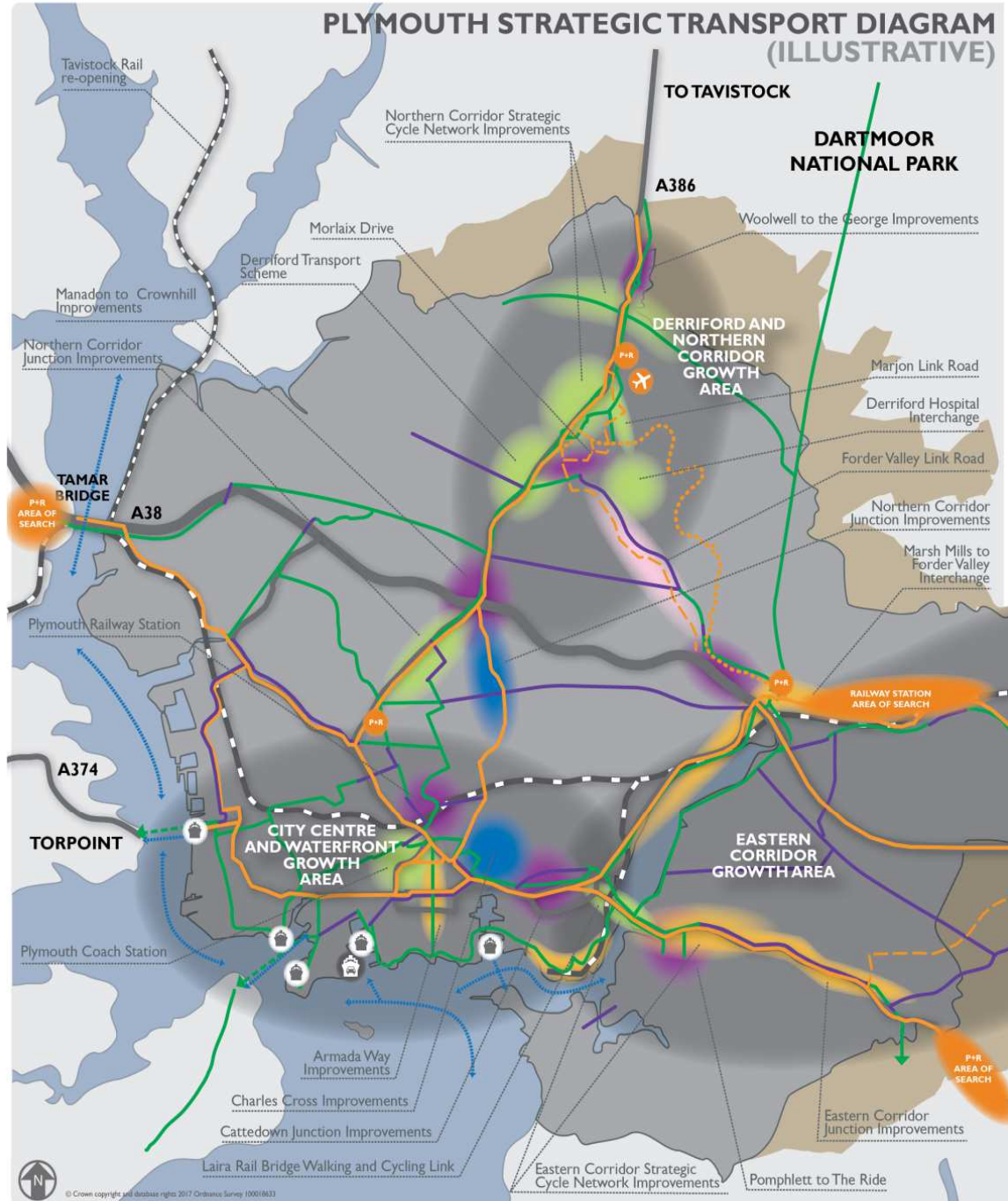
Major Strategic Transport Schemes



Paul Barnard
Sally Farley
Bob Cocker
Adrian Trim



PLYMOUTH STRATEGIC TRANSPORT DIAGRAM (ILLUSTRATIVE)



SUSTAINABLE TRANSPORT LINKS BETWEEN PLAN AREA COMMUNITIES



INSERT MAP KEY

- Area of Outstanding Natural Beauty
- Bus link
- Rail link - current
- Rail link - aspiration
- Cycle link - current
- Cycle link - aspiration
- Ferry link - current
- Ferry link - aspiration

MAIN MAP KEY

- Existing and funded core strategic cycle network
- Next phase of core strategic cycle network
- Future strategic public transport bus corridor
- Interim strategic public transport bus corridor (until forder valley link road is built)
- Current strategic public transport bus corridor
- Current Park and Ride sites
- Proposed Park and Ride sites
- Airport safeguarded
- Continental ferry
- Ferry port
- Ferry routes
- Rail
- Schemes delivered or in construction. Delivery (2015-2017)
- Funding secured with business case approved. Delivery (2017-2021)
- Funding approved subject to full business case. Delivery (2018-2020)
- Schemes approved subject to programme entry business case. Delivery (2017-2020)
- Pipeline of schemes, Delivery (2019 onwards)

The context of Government funding for transport schemes

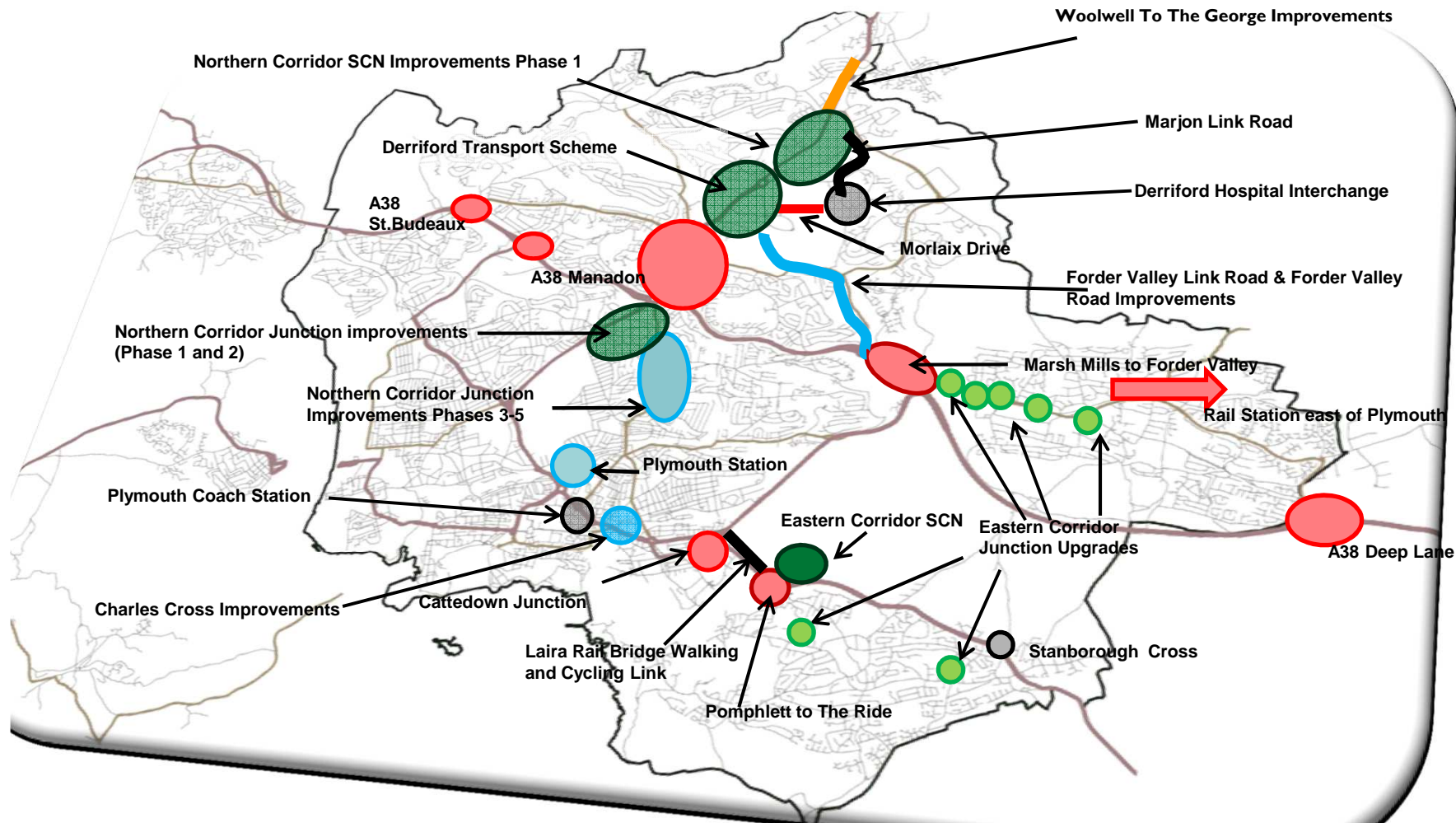


Growth Deal Funded Schemes	Major Transport Schemes	Non-Major Transport Schemes	Growth Deal Funding
Devon County Council	5	5	£25.68m
Plymouth City Council	2	6	£66.75m
Somerset County Council	4	2	£36.00m
Torbay Council	3	1	£15.53m

- Completed schemes (2015 – 2016)
- Schemes in delivery phase Growth Deal 1 (2017-2018)
- LTB or DfT Funding secured (Business Case approved) (2017 -2021)
- LTBoR DfT Funding approved subject to PE & Full Business Case(2017-2019)
- On PCC Capital Programme scheme in early design stage (2019-2021)
- “Pipeline of schemes” for future Growth Deals/RIS/GHF (2020 onwards)



Tavistock Rail



Traffic Management



- As Plymouth grows in accordance with the plans in the JLP, so too will the demands for travel.
- The network is sensitive – there is an existing lack of resilience with multiple demands on access to the network managed by Network Manager.
- One of the fundamental design parameters we work to is that there is a need to keep traffic moving at the same time as undertaking the works.
- Consultations on major transport schemes always seek local knowledge to feed into both the design and future traffic management arrangements.
- As an integral part of the more detailed design work for major schemes a Traffic Management Plan is prepared by the contractor and submitted for approval by the Network Manager.
- Before moving to implementation on the ground, the Portfolio Holder oversees the final arrangements.

Traffic Management



- Whole series of communications and publicity undertaken before works commence.
- Mandatory to advertise diversions and road closures in the press in advance of a scheme - so people know what is happening when.
- Once scheme construction commences the approach to Traffic Management needs to be adaptable and responsive:
 - driver behaviour
 - Progression of works
 - Unforeseen circumstances
 - Issues elsewhere on the network
- During scheme construction we constantly monitor and revise Traffic Management arrangements to ensure the network is working as efficient as possible, for example allowing more green time at signals to 'flush' traffic through.

Derriford Hospital Interchange



- Two-way operation of Derriford Hospital Interchange for buses
- Will enable direct link to Marjon Hill and facilitate future bus access to the Hospital via Morlaix Drive
- Segregation of buses from taxi and passenger drop-off
- Reduced congestion outside Hospital entrance
- Improved bus journey times and reliability



Total cost: £2.32 Million

Construction: January 2016 – January 2017.

Derriford Transport Scheme



- Large scale junction upgrades at Derriford Roundabout and William Prance Road / Tavistock Road
- Provides infrastructure to support large scale growth in Derriford and north of the city
 - 4,300 homes
 - 9000 jobs
- Includes bus priority, capacity and walking & cycling improvements



Total cost – £13 Million

Construction start – January 2017 – March 2018

Northern Corridor Junction Improvements (2015/16 - 2019/20)



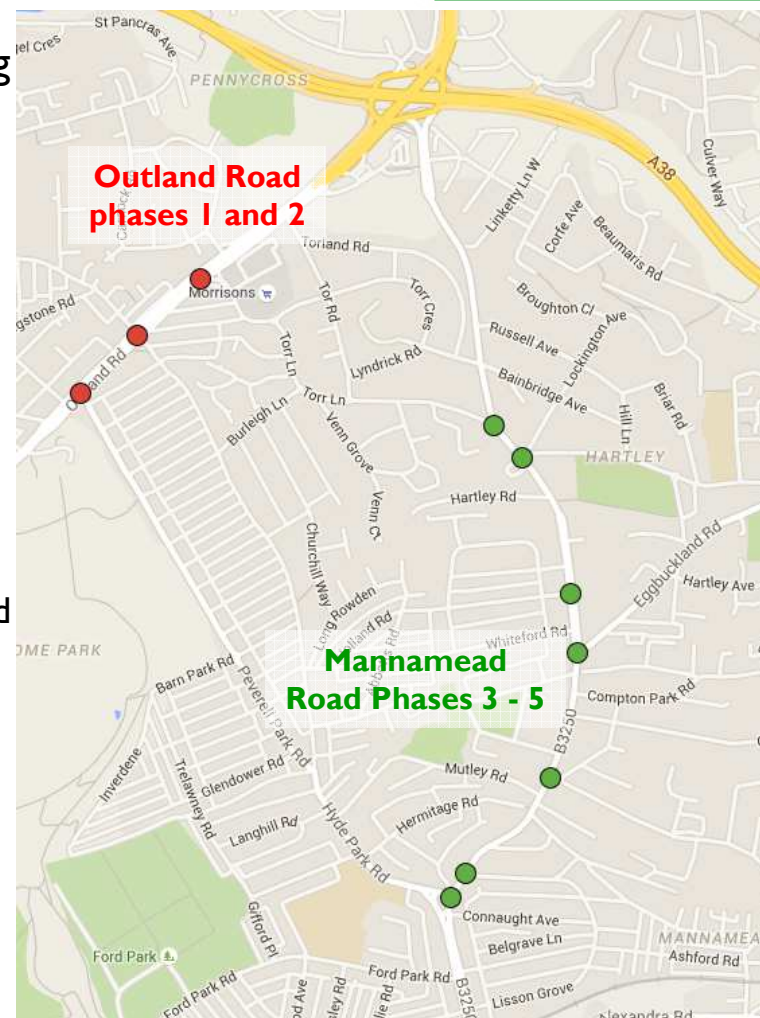
- Rolling programme of junction improvements including signal equipment upgrades
- Phases 1 and 2 on Outland Road (50,000 vehicles per day)
 - Upgrading the traffic signals to more modern and efficient technology
 - Improvements to road layouts, to increase traffic capacity and reduce journey times
 - It will also improve road safety by upgrading pedestrian crossings and providing new on-road cycle lanes
 - The right turn lane into Ham Drive will also be extended to just north of Torr Lane (just past Morrisons)
- Phases 3 to 5 – Mannamead Road corridor

Total cost (all years): £3.392 Million

Overall Construction complete by : 2020

Outland Road: September 2016 to April 2017

Mannamead Road: 2018/19 – 2019/20



Eastern Corridor Junction Improvements (2015/16 - 2020/21)

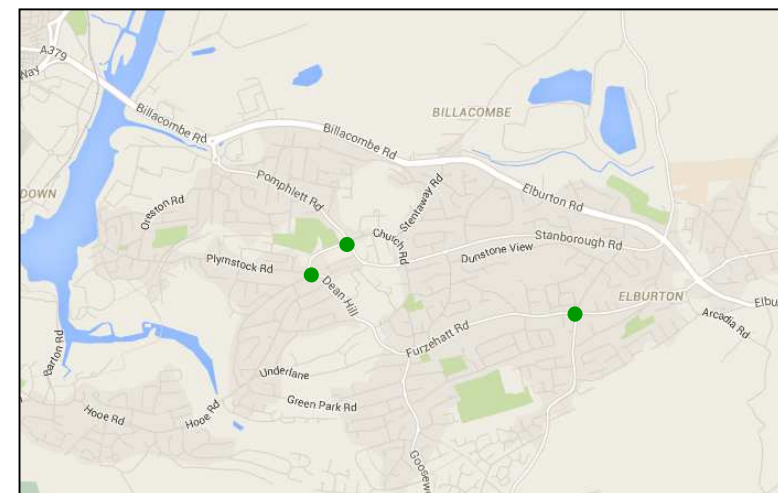
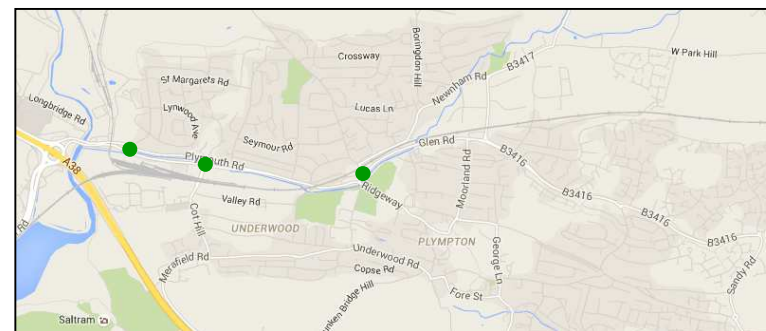


- Five year rolling programme of junction improvements including signal equipment upgrades
- Directly awarded DfT funding contribution
- Focus on key junctions within the Plympton and Plymstock areas of the city
- Construction for first planned site is Plymouth Road at Cot Hill
- Upgrading ageing signal infrastructure with capacity improvements
- Improvements for pedestrians and cyclists where possible

Total cost (all years): £3.0 Million

Growth Deal: £2.1 Million

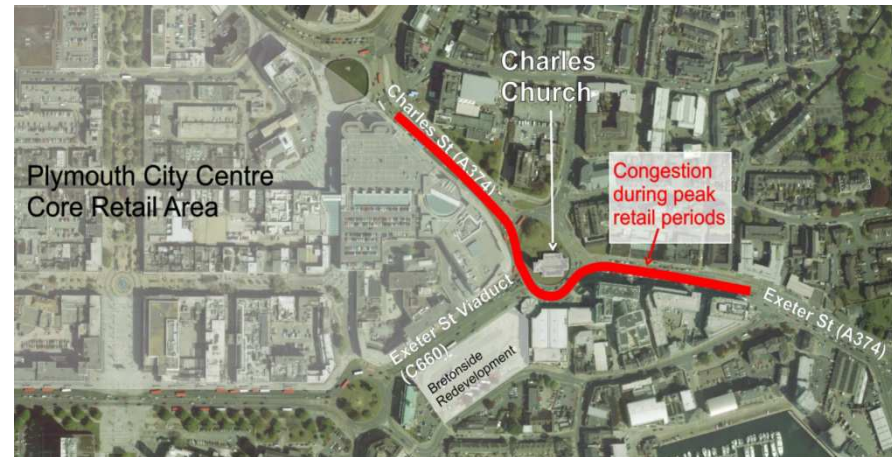
Construction: 2018 - 2021



Charles Cross



- Charles Cross is a gateway to the city, a memorial to world war 2, and a junction of the A374 within the city centre. It is required to manage multiple demands in a restricted space.
- Traffic now causes congestion, delays and severance for all, including buses and pedestrians
- The British Land Bretonside redevelopment will provide a new pedestrian crossing and other improvements on the viaduct
- Scheme will improve the management of traffic around the roundabout with improvements for buses, pedestrians and cyclists.



Total cost – £3 Million

Anticipated construction – 2018

Northern corridor SCN Improvements (2015/16 - 2019/20)



The scheme will deliver the following walking and cycling improvements:-

- Tavistock Road improvements (to be delivered in conjunction with Derriford Transport Scheme)
- Plymbridge Road (Wrigleys roundabout to the George Junction Park and Ride)
- Southway Drive (The George Junction to Southway shopping centre)
- Crownhill Road to the A38
- Small scale enhancements to related walking and cycling facilities on the Northern Corridor



Total cost (all years): £3.5 Milion

Construction: 2016 - 2020

Eastern corridor and City Centre SCN (2015/16 - 2020/21)



The scheme will deliver the following walking and cycling improvements, all of which are part of the adopted Strategic Cycle Network:-

- **City Centre cycling and walking:** improvement works between North Cross and The Hoe, including enhancements to the public realm along Armada Way
- **Barbican to Laira Rail Bridge:** improvements for pedestrians and cyclists along National Cycle Network route 27, also part of the South West Coast Path
- **The Ride cycle path:** widening an 800m section of National Cycle Network 27
- **Laira Rail Bridge to Broxton Drive:** approx. 700m of new off-road shared surface path providing links in to the Saltram Meadow development
- Additional relatively small-scale related walking and cycling enhancements on the Eastern corridor

Total cost: £4.9 Million

Construction: 2016 - 2020



Growth Deal 2 Scheme

Forder Valley Link Road



- New 1km road linking William Prance Road, in Derriford, with Forder Valley Road and Novorossiysk Road
- Supported by a bridge over the Bircham Valley
- Larger signalised junction at the Forder Valley Road and Novorossiysk Road intersection
- Includes walking and cycling facilities throughout
- 16,000 vehicles per day expected to use this new route
- Provides alternative route between A38 and Derriford and resilience to network
- Complements proposals at Derriford Roundabout and Manadon Roundabout
- Public consultation held between September to October 2016



Total cost: £33.4 Million

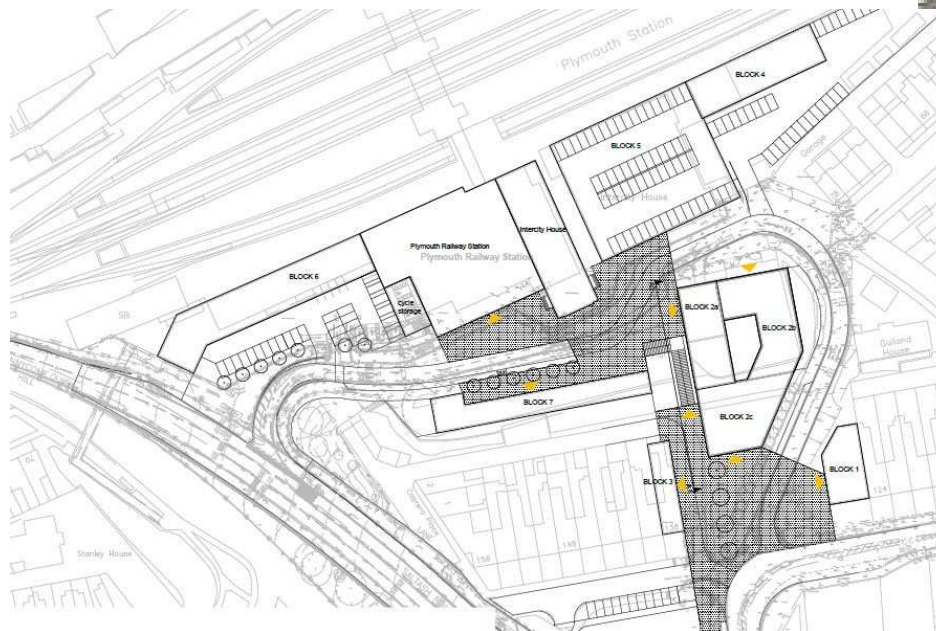
**Construction anticipated : May 2018 –
May 2020**

Growth Deal 3



Plymouth Central Station

- Plymouth Central Station £5m Growth Deal funding towards £50+m Scheme



Total cost: £50+ Million
Construction anticipated : 2018 – 2020

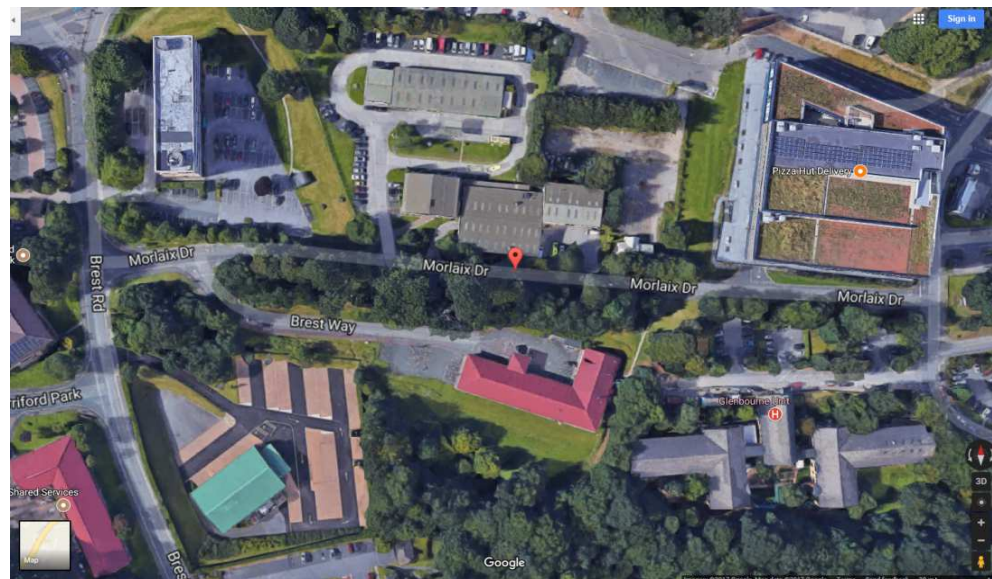
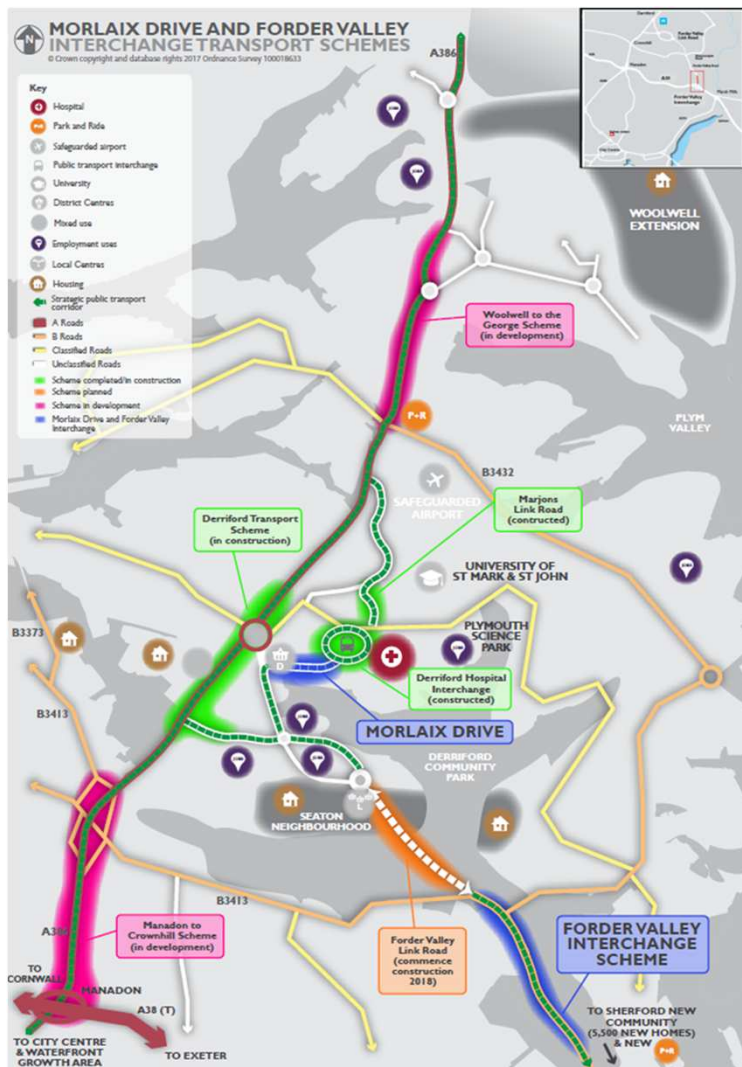
Schemes in bidding process: Woolwell to the George



- Bid to Highways England Growth and Housing Fund
- £15.7 Million scheme (£5 Million bid)
- Funding profile up to March 2020



Schemes in bidding process: Morlaix Drive

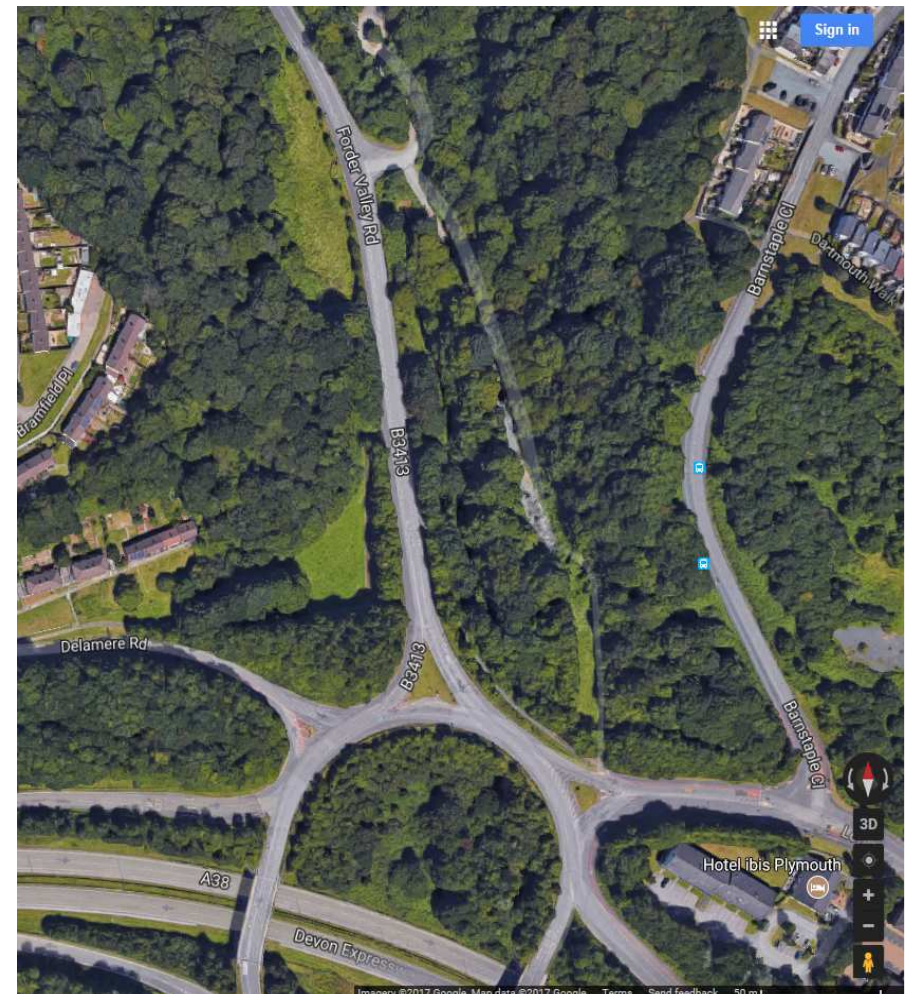


- Bid to Department for Transport's National Productivity Investment Fund
- £5 Million scheme (£3.3 Million bid)
- Funding up to March 2020

Schemes in bidding process: Forder Valley Interchange



- Forder Valley interchange at intersection of Forder Valley Road and A38.
- Bid to Department for Transport National Productivity Investment Fund (NPIF).
- £8.5 Million scheme (£5 Million bid).
- Improvements to Forder Valley Roundabout and Forder Valley Road.
- Funding up to March 2020.



Pipeline schemes



Future schemes (no delivery constraint currently)

- **Pomphlett to the Ride:** £19 Million scheme of highways improvements.
- **Cattedown Roundabout:** £7.9 Million scheme to reconfigure the existing layout to a signalized junction.
- **Manadon and Marsh Mills:** Capacity improvements to facilitate the growth of the city at its intersections with the A38.

An Example of Engagement: Derriford Transport Scheme since 2015



- October 2015: Series of public road shows and Member drop-in sessions
- Spring 2016: Scheme boards put up on site
- Autumn 2016 onwards: Regular meetings held with the emergency services
- January 2017 and May 2017: Drop-in sessions for land Registry staff.
- March 2017: A letter drop to businesses prior to the closure of William Prance Rd upcoming traffic management changes
- Press releases have been issued to inform travellers of changes both prior to and during the works,
- Fortnightly updates prepared for those who have requested them or signed up for them via social media
- Since March 2017: Monthly 'Meet the Team' sessions are being held at Windsor House for members of the public and local businesses to meet both PCC staff and the contractors.
- There have been individual meetings with businesses as and when requested
- Variable message signing is in place providing motorists with advanced warnings of potential delays
- There is a Monthly progress of works and anticipated following months works for briefing with public transport operators
- There are monthly meetings held with Land Registry
- PCC Webpage is updated as necessary
- PCC's weekly road report also includes information for changes to the road works at Derriford (which is provided to the press)

An Example of Engagement: Leaflet for DTS



DERRIFORD TRANSPORT SCHEME



Monday 20 February to Sunday 5 March 2017



Work area	When	Traffic management
Tavistock Road between Looe Lane and Honeyford Close	Monday 20 February to Sunday 5 March Night works from 7.30pm* Monday 20 February to Tuesday 21 February and Monday 27 February to Tuesday 28 February	Lane closure on A386 Tavistock Road southbound on the approach to Derriford Roundabout (adjacent to the Jack Rabbit). Two lanes to remain open. Additional lane closures will be required for the night works. Traffic on A386 Tavistock Road will be running on a single lane with temporary two-way traffic lights.
Tavistock Road between Sendal's Way to just north of Derriford Roundabout	Monday 20 February to Sunday 5 March	Outside lanes closed on A386 Tavistock Road (northbound and southbound). Bus lane restrictions suspended between McDonalds and Derriford Roundabout for use by all traffic. Derriford Roundabout inner lane closed to traffic at various points. Bus stop closed on A386 Tavistock Road southbound just after Brest Road. Please use the stop opposite the car wash.
William Prance Road between the junction with Tavistock Road and the Lead Registry.	Monday 20 February to Tuesday 28 February Weekend works* Saturday 25 February to Sunday 26 February	Cycle and footpaths along William Prance Road will be closed at various points and diversions will be in place. Some minor lane closures will be needed for short periods outside of peak hours and traffic will be controlled by 'stop-go' boards.
William Prance Road between the Lead Registry and junction with Brest Road	Monday 20 February to Tuesday 28 February Weekend works* Saturday 25 February to Sunday 26 February	Cycle and footpaths along William Prance Road will be closed at various points and diversions will be in place. Some minor lane closures will be needed for short periods outside of peak hours and traffic will be controlled by 'stop-go' boards.

The Derriford Transport Scheme continues with main works taking place between 8am and 6pm Monday to Friday, although the key traffic management will remain in place at all times. The next fortnight will see the team continue to undertake site clearance, downy utility services and fill in the central reservation on Tavistock Road, as well as work to lay the new kerb and drainage blocks. The team will also be carrying out site clearance work along William Prance Road, ready for work to begin in late March. Night working will involve utility duct installations under pedestrian crossings at Tavistock Road near the Jack Rabbit and Mercedes garage.

The traffic management is regularly reviewed to ensure disruption is kept to a minimum, however as these works are being undertaken on a sensitive part of the network we recommend allowing extra time for your journey.

* Dates are provisional and are subject to change



Options for improvement



- In-house arrangements for the co-ordination of Traffic Management.
- Cross boundary co-ordination of schemes.
- Earlier engagement with ward councillors at concept stage e.g. Member walkabouts.
- Consider increased use of extended hours working ensuring value for money and public amenity.